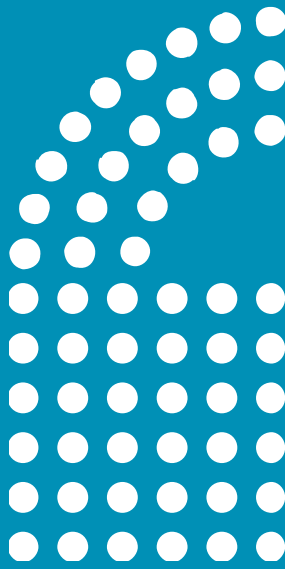


During this past year,
Natchaug Hospital conducted

580 psychological assessments on
children and adolescents

1,500 psychiatric evaluations for
children and adolescents



Psychiatric, Psychological, and Neuropsychological Evaluations for Schools

At Your School or Office

Natchaug Hospital's clinical teams use a variety of interview techniques and assessment tools to generate recommendations for school interventions and follow up care.

Psychiatric, Psychological and Neuropsychological evaluations can be requested to gain information and insight on

- School avoidance
- Social functioning
- Emotional Functioning
- Psychiatric diagnoses
- Behavior problems
- Level of risk
- Learning, academic, cognitive functioning

This clinical team, for this service, will not prescribe medications.

Natchaug Hospital is the primary provider of behavioral health services for child, adolescent and adult residents of Eastern Connecticut who are struggling to cope with mental illness, emotional trauma and substance abuse problems.

Natchaug Hospital's ten-site network of care includes inpatient, partial hospitalization, intensive outpatient, and extended day treatment programs, and State-approved special education for grades 1—12.

Program locations:

Danielson	Enfield
Groton	Mansfield
Montville	Norwich
Putnam	Old Saybrook
Vernon	Windham

Natchaug Hospital is a non-profit 501(c)(3) organization and a member of Hartford Health-Care

For more information, please call 860-456-1311
or visit our website: www.natchaug.org

A service provided by Natchaug Hospital for educators, school social workers, school guidance counselors, school nurses, school-based psychologists and others who work with school-age youth



Emily Casey, Psy.D.
Carrie Beckstein Pichie, Ph.D.
Leeann M. Rheaume, Psy.D.
Paul Weigle, M.D.

We Come To You!

**Natchaug
Hospital**
A Hartford HealthCare Partner



Psychiatric, Psychological, & Neuropsychological Evaluations for Schools

At Your School or Office

Psychiatric, Psychological, and Neuropsychological evaluations are often helpful to school districts when there are concerns about an aspect of a student's functioning that impacts his or her presentation or performance at school.

Natchaug Hospital provides evaluations to generate information that can aid in determining if a student has a disability requiring supportive services at school. Such evaluations also provide further information to the planning and placement team about the identified areas of concern and suggest appropriate interventions for remediation.

For more information or to make a referral, contact:

- Emily Casey, Clinical Psychologist
860-456-1311 x341
- Jill Bourbeau, Natchaug School Director
860-456-1311 x257

About our Team:

Paul Weigle, M.D. earned his medical doctorate at New Jersey Medical School. He did his postgraduate training at Harvard Medical School, including a medical internship, general psychiatry residency, and child and adolescent psychiatry fellowship (where he served as the chief resident). Dr Weigle has cared for children and adolescents in the outpatient setting and provided psychiatric evaluations for schools for the past seven years for the Providence School department and other schools in Rhode Island. Currently, Dr. Weigle gives psychiatric care to children and teens at the Partial Hospitalization Program (PHP), Intensive Outpatient Program (IOP), and Extended Day Treatment (EDT) programs at the Joshua Center in Mansfield and Old Saybrook and at CarePlus in Groton. He has served on the American Academy of Child and Adolescent Psychiatry (AACAP)'s Media Committee since 2002, where he has presented research findings on the effects of media on children.

Emily Casey, Psy.D. is a Licensed Clinical Psychologist and the Director of Psychological Services at Natchaug Hospital. She earned her B.A. in Psychology at the College of St. Benedict/St. John's University and M.A. and Psy.D. in Clinical Psychology at the Illinois School of Professional Psychology. Dr. Casey currently provides psychological evaluations for Natchaug Hospital's inpatient, outpatient, and clinical day treatment programs, as well as for juvenile courts. She also conducts psychological evaluations and risk assessments for area school systems. She coordinates Natchaug Hospital's Juvenile Justice Intermediate Evaluation (JJIE) program and also trains and supervises graduate students in the area of psychological assessment.



Carrie Beckstein Pichie, Ph.D. is the Director of Ambulatory Services at Natchaug Hospital, overseeing 11 locations providing care to children, adolescents and adults across Eastern Connecticut. The ambulatory programs provide treatment for individuals with mental health, substance use, or co-occurring disorders through IOP, PHP, Outpatient Detoxification, EDT, and IICAPS. Dr. Pichie is a licensed clinical psychologist in CT and MA, with over 17 years of experience. She received her Master's Degree in Psychology from Boston University and Ph.D. in Clinical Psychology from Fairleigh Dickinson University, with a specialization in child psychology. She completed post-doctoral training in neuropsychology at McLean Hospital in Belmont, MA and has extensive experience in psychological assessment. Dr. Pichie has held various clinical and administrative roles in several inpatient, residential and outpatient settings in MA and CT.

Leeann M. Rheaume, Psy.D. is a Licensed Clinical Psychologist at Natchaug Hospital. She conducts psychological evaluations for the inpatient, outpatient, and clinical day treatment programs, as well as the Juvenile Justice Intermediate Evaluation Program. She earned a Bachelor of Science from Trinity College where she majored in Psychology. She obtained a M.A. degree from Teachers College, Columbia University, and a Psy.D. in Clinical Psychology from the Graduate Institute of Professional Psychology at the University of Hartford. She completed her internship at the Village for Families & Children in Hartford, CT, where she continues to provide outpatient therapy services.